

# LPDM\_S Series LPDH\_S Series

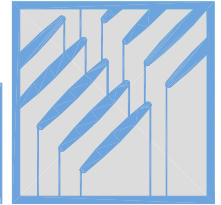
Low Pressure Drop Heat Sink  
with Attachment Holes

**ALPHA**

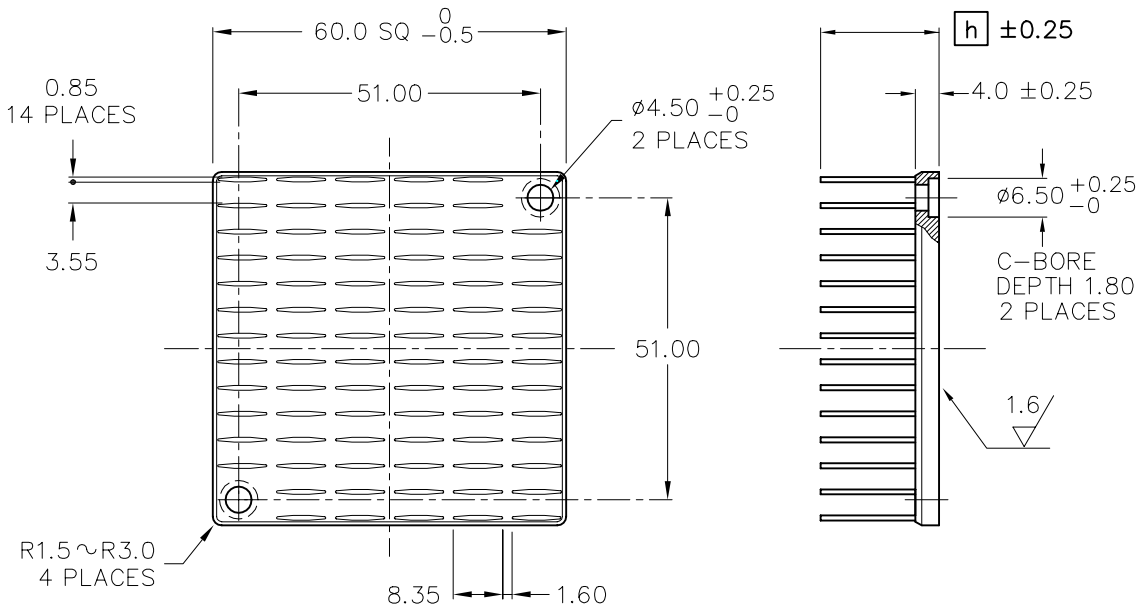
# ALPHA

Low Pressure Drop Heat Sink  
with attachment holes

# LPDM60S



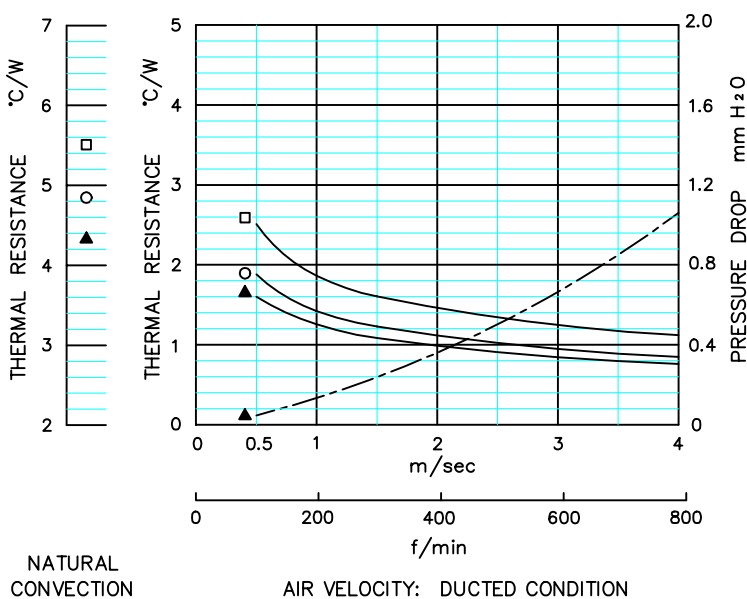
DIM



MODEL	HEIGHT $h$	WEIGHT (grams)
LPDM60S-15B	15	50.4
LPDM60S-20B	20	55.9
LPDM60S-25B	25	61.4

MATERIAL : A 6063  
FINISH : BLACK ANODIZE  
DIMENSIONS : mm

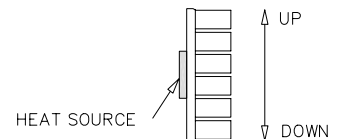
DATA



- LPDM60S-15B
- LPDM60S-20B
- ▲ LPDM60S-25B

● DUCTED CONDITION  
DUMMY HEATER SIZE: 12.7 SQ  
THERMAL RESISTANCE ———  
PRESSURE DROP - - - -

● NATURAL CONVECTION  
DUMMY HEATER SIZE: 12.7 SQ  
DISSIPATED POWER: 9.9(W)



NOTE ORIENTATION OF HEAT SINK USED FOR NATURAL CONVECTION TESTING

■ BASED ON ALPHA'S STANDARD TEST PROCEDURE. REFER TO TECHNICAL INFORMATION.

Alpha Company Ltd.

256-1 UEDA, NUMAZU-CITY SHIZUOKA-PREF., JAPAN  
PHONE +81(55)966 0789  
FAX +81(55)966 9192  
E mail : alpha@micforg.co.jp  
URL : http://www.micforg.co.jp

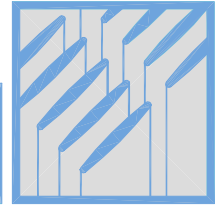
Alpha Novatech, Inc. - a subsidiary of Alpha Company.

473 Sapena Ct. #12 Santa Clara, CA 95054 USA  
PHONE +1(408)567-8082  
FAX +1(408)567-8053  
E mail : sales@alphanovatech.com  
URL : http://www.alphanovatech.com

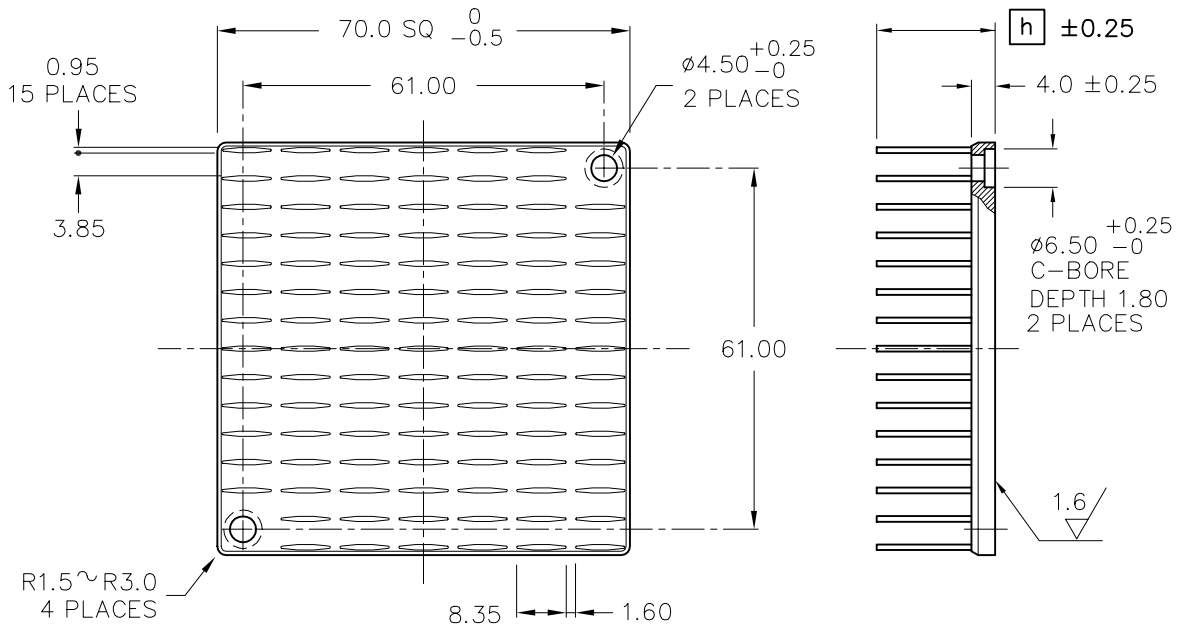
# ALPHA

## Low Pressure Drop Heat Sink with attachment holes

# LPDM70S



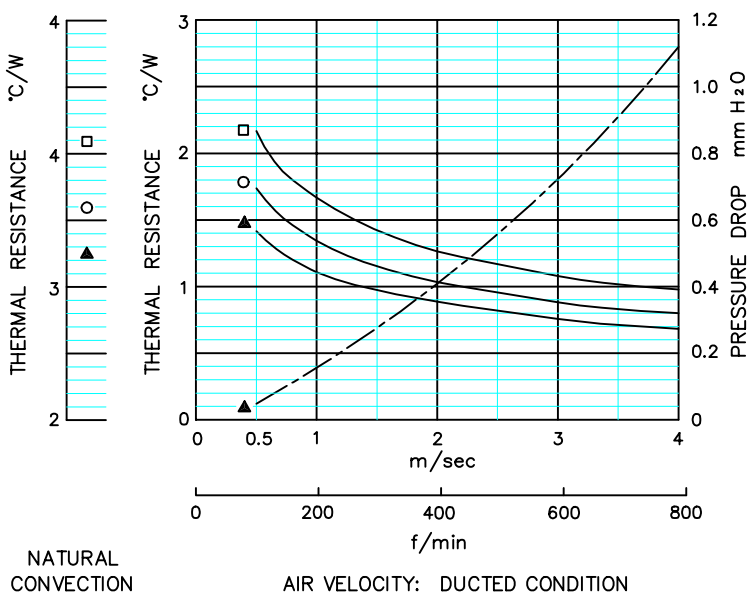
DIM



MODEL	HEIGHT [h]	WEIGHT (grams)
LPDM70S-15B	15	70.7
LPDM70S-20B	20	78.6
LPDM70S-25B	25	86.6

MATERIAL : A 6063  
 FINISH : BLACK ANODIZE  
 DIMENSIONS : mm

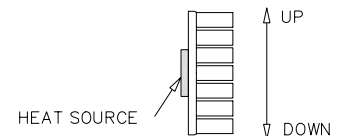
DATA



□ LPDM70S-15B  
 ○ LPDM70S-20B  
 ▲ LPDM70S-25B

● DUCTED CONDITION  
 DUMMY HEATER SIZE: 12.7 SQ  
 THERMAL RESISTANCE (solid line)  
 PRESSURE DROP (dashed line)

● NATURAL CONVECTION  
 DUMMY HEATER SIZE: 25.4 SQ  
 DISSIPATED POWER: 13.3(W)



NOTE ORIENTATION OF HEAT SINK USED FOR NATURAL CONVECTION TESTING

● BASED ON ALPHA'S STANDARD TEST PROCEDURE. REFER TO TECHNICAL INFORMATION.

Alpha Company Ltd.

256-1 UEDA, NUMAZU-CITY SHIZUOKA-PREF., JAPAN  
 PHONE +81(55)966 0789  
 FAX +81(55)966 9192  
 E mail : alpha@micforg.co.jp  
 URL : http://www.micforg.co.jp

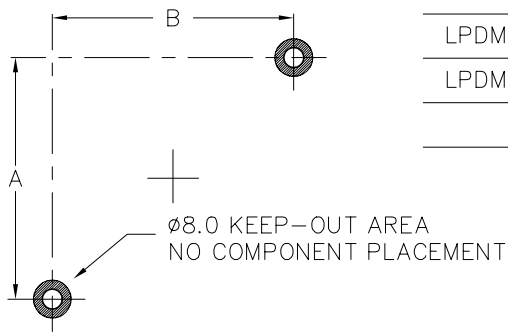
Alpha Novatech, Inc. - a subsidiary of Alpha Company.

473 Sapena Ct. #12 Santa Clara, CA 95054 USA  
 PHONE +1(408)567-8082  
 FAX +1(408)567-8053  
 E mail : sales@alphanovatech.com  
 URL : http://www.alphanovatech.com

REF



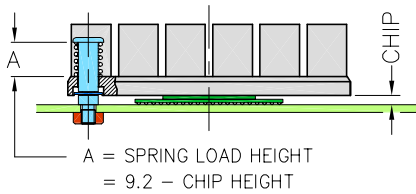
● BOARD KEEPOUT PATTERNS



LPDM60S AND UBM60S	51.0	51.0
LPDM70S AND UBM70S	61.0	61.0
MODEL	A	B

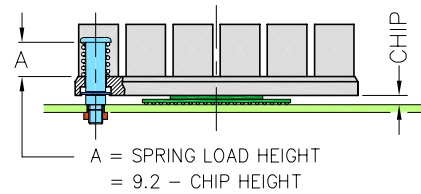
● INSTALLATION

USE HEX NUTS M3x0.5



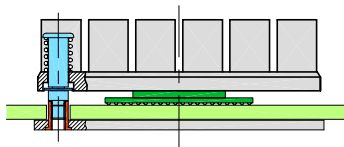
REQUIRES ø3.2 THRU HOLES IN BOARD.  
RECOMMENDED P.C.B THICKNESS 1.6mm.  
MINIMUM CHIP HEIGHT 1.5mm.

USE MAC8 TH-1.6-XX-M3



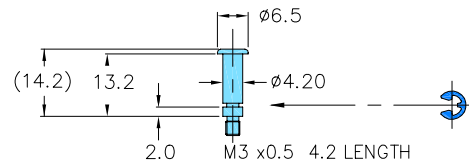
REQUIRES ø3.7 THRU HOLES IN BOARD.  
MAC8 THREAD INSERT NEED THE SOLDERING.  
RECOMMENDED P.C.B THICKNESS 1.6~2.6mm.  
MINIMUM CHIP HEIGHT 1.5mm.

USE CUSTOM BACKING-PLATE



CUSTOM DESIGN FOR ANY P.C.B THICKNESS.

SHOULDER-SCREW/RETAINING RING E-2.5



REFER TO THE DRAWING FOR DETAIL SPECIFICATION.

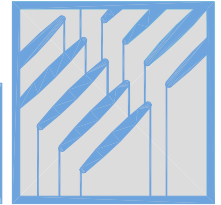
● FORCE



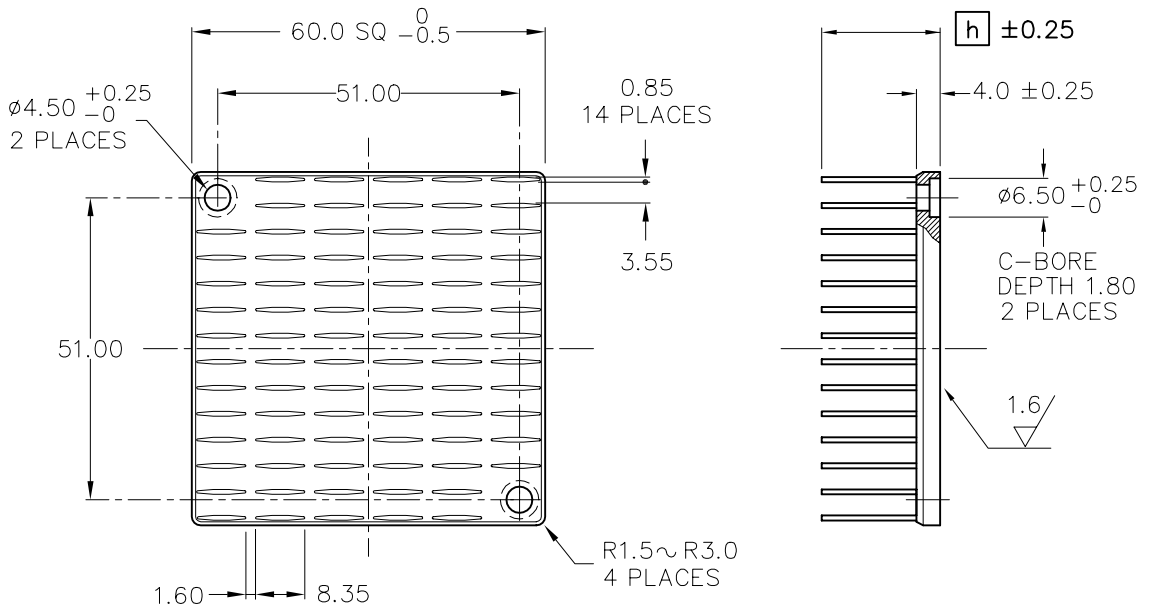
# ALPHA

Low Pressure Drop Heat Sink  
with attachment holes

# LPDH60S



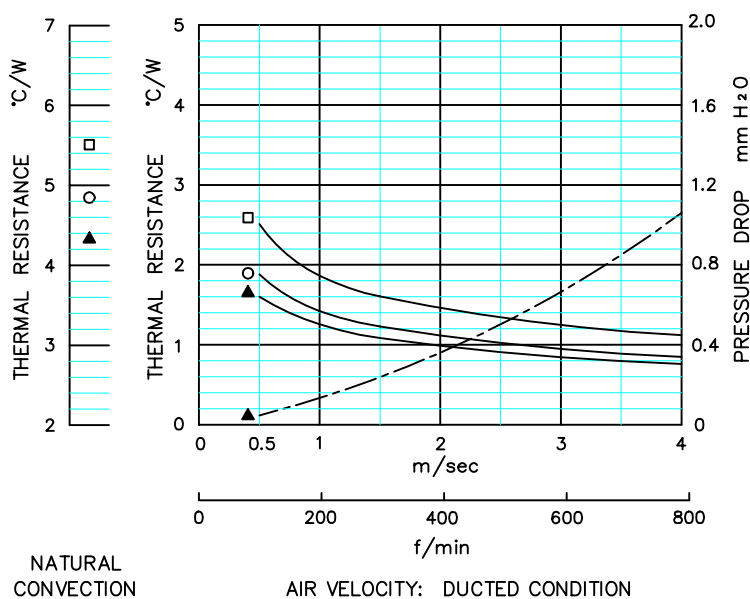
DIM



MODEL	HEIGHT [h]	WEIGHT (grams)
LPDH60S-15B	15	50.4
LPDH60S-20B	20	55.9
LPDH60S-25B	25	61.4

MATERIAL : A 6063  
 FINISH : BLACK ANODIZE  
 DIMENSIONS : mm

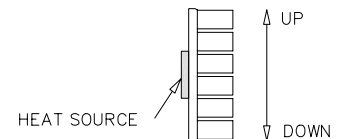
DATA



- LPDH60S-15B
- LPDH60S-20B
- ▲ LPDH60S-25B

● DUCTED CONDITION  
 DUMMY HEATER SIZE: 12.7 SQ  
 THERMAL RESISTANCE \_\_\_\_\_  
 PRESSURE DROP - - - - -

● NATURAL CONVECTION  
 DUMMY HEATER SIZE: 12.7 SQ  
 DISSIPATED POWER: 9.9(W)



NOTE ORIENTATION OF HEAT SINK USED FOR NATURAL CONVECTION TESTING

■ BASED ON ALPHA'S STANDARD TEST PROCEDURE.  
 REFER TO TECHNICAL INFORMATION.

Alpha Company Ltd.

256-1 UEDA, NUMAZU-CITY SHIZUOKA-PREF., JAPAN  
 PHONE +81(55)966 0789  
 FAX +81(55)966 9192  
 E mail : alpha@micforg.co.jp  
 URL : http://www.micforg.co.jp

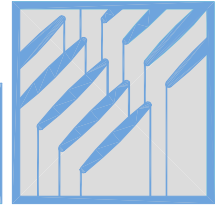
Alpha Novatech, Inc. - a subsidiary of Alpha Company.

473 Sapena Ct. #12 Santa Clara, CA 95054 USA  
 PHONE +1(408)567-8082  
 FAX +1(408)567-8053  
 E mail : sales@alphanovatech.com  
 URL : http://www.alphanovatech.com

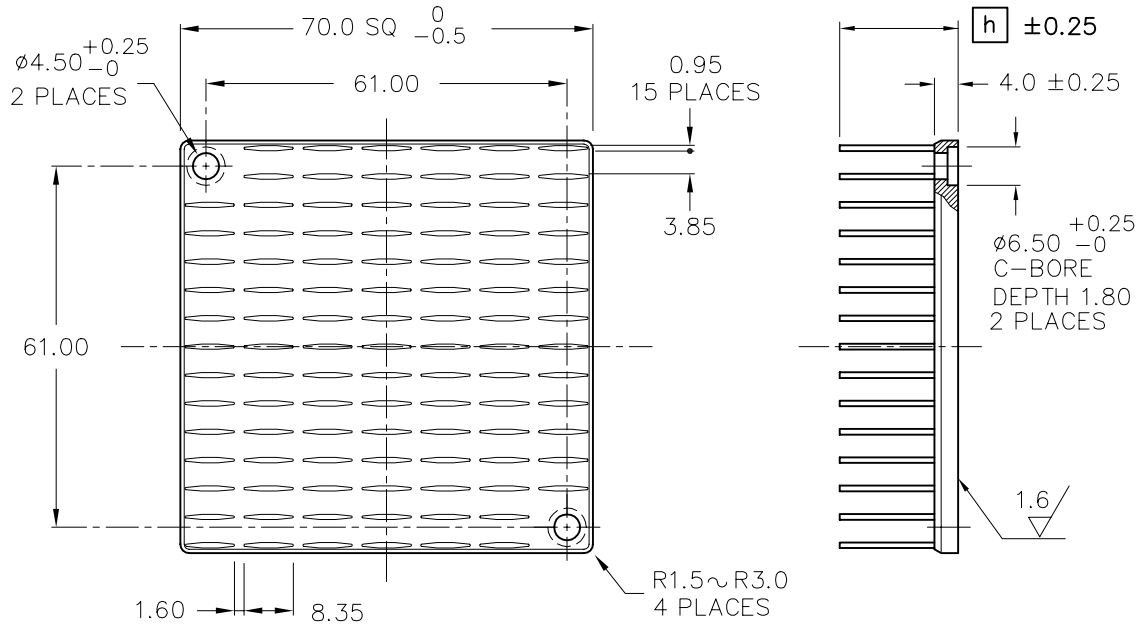
# ALPHA

Low Pressure Drop Heat Sink  
with attachment holes

# LPDH70S



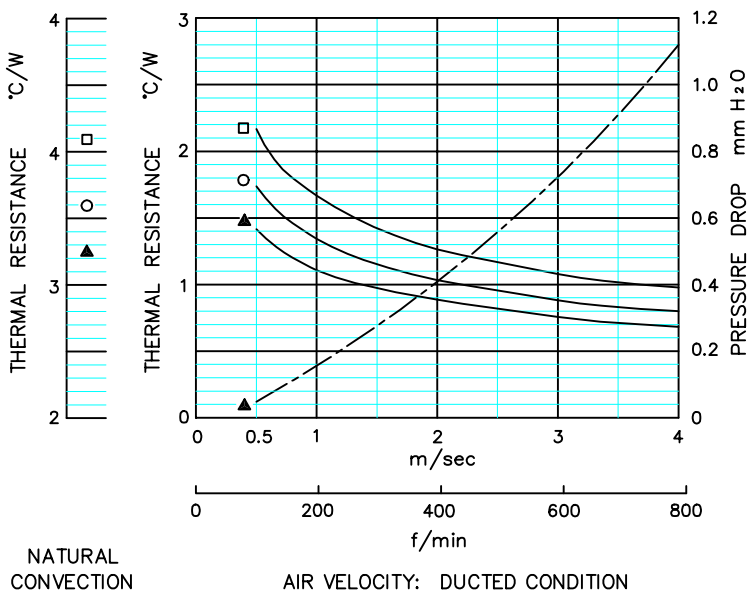
DIM



MODEL	HEIGHT [h]	WEIGHT (grams)
LPDH70S-15B	15	70.7
LPDH70S-20B	20	78.6
LPDH70S-25B	25	86.6

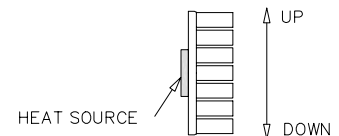
MATERIAL : A 6063  
 FINISH : BLACK ANODIZE  
 DIMENSIONS : mm

DATA



- LPDH70S-15B
- LPDH70S-20B
- ▲ LPDH70S-25B

- DUCTED CONDITION  
 DUMMY HEATER SIZE: 12.7 SQ  
 THERMAL RESISTANCE \_\_\_\_\_  
 PRESSURE DROP - - - - -
- NATURAL CONVECTION  
 DUMMY HEATER SIZE: 25.4 SQ  
 DISSIPATED POWER: 13.3(W)



NOTE ORIENTATION OF HEAT SINK USED FOR NATURAL CONVECTION TESTING

- BASED ON ALPHA'S STANDARD TEST PROCEDURE.  
 REFER TO TECHNICAL INFORMATION.

Alpha Company Ltd.

256-1 UEDA, NUMAZU-CITY SHIZUOKA-PREF., JAPAN  
 PHONE +81(55)966 0789  
 FAX +81(55)966 9192  
 E mail : alpha@micforg.co.jp  
 URL : http://www.micforg.co.jp

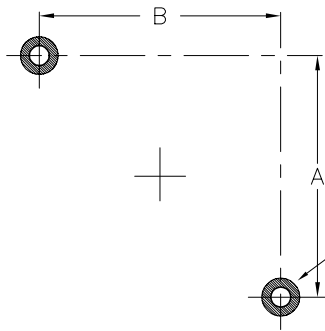
Alpha Novatech, Inc. - a subsidiary of Alpha Company.

473 Sapena Ct. #12 Santa Clara, CA 95054 USA  
 PHONE +1(408)567-8082  
 FAX +1(408)567-8053  
 E mail : sales@alphanovatech.com  
 URL : http://www.alphanovatech.com

REF



● BOARD KEEPOUT PATTERNS

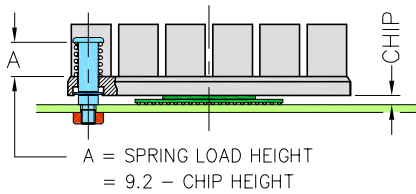


LPDH60S AND UBH60S	51.0	51.0
LPDH70S AND UBH70S	61.0	61.0
MODEL	A	B

ø8.0 KEEP-OUT AREA  
NO COMPONENT PLACEMENT

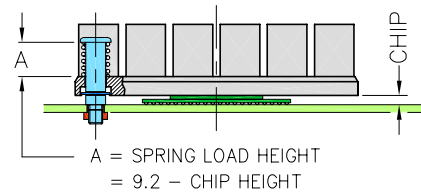
● INSTALLATION

USE HEX NUTS M3x0.5



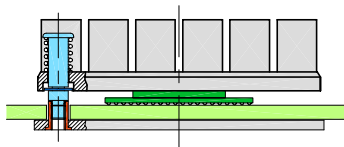
REQUIRES ø3.2 THRU HOLES IN BOARD.  
RECOMMENDED P.C.B THICKNESS 1.6mm.  
MINIMUM CHIP HEIGHT 1.5mm.

USE MAC8 TH-1.6-XX-M3



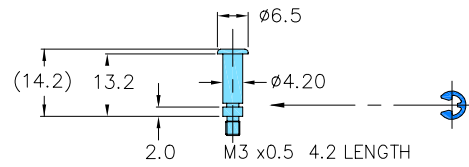
REQUIRES ø3.7 THRU HOLES IN BOARD.  
MAC8 THREAD INSERT NEED THE SOLDERING.  
RECOMMENDED P.C.B THICKNESS 1.6~2.6mm.  
MINIMUM CHIP HEIGHT 1.5mm.

USE CUSTOM BACKING-PLATE



CUSTOM DESIGN FOR ANY P.C.B THICKNESS.

SHOULDER-SCREW/RETAINING RING E-2.5



REFER TO THE DRAWING FOR DETAIL SPECIFICATION.

● FORCE

