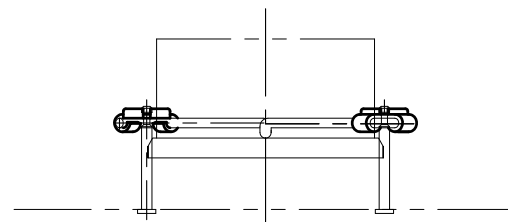
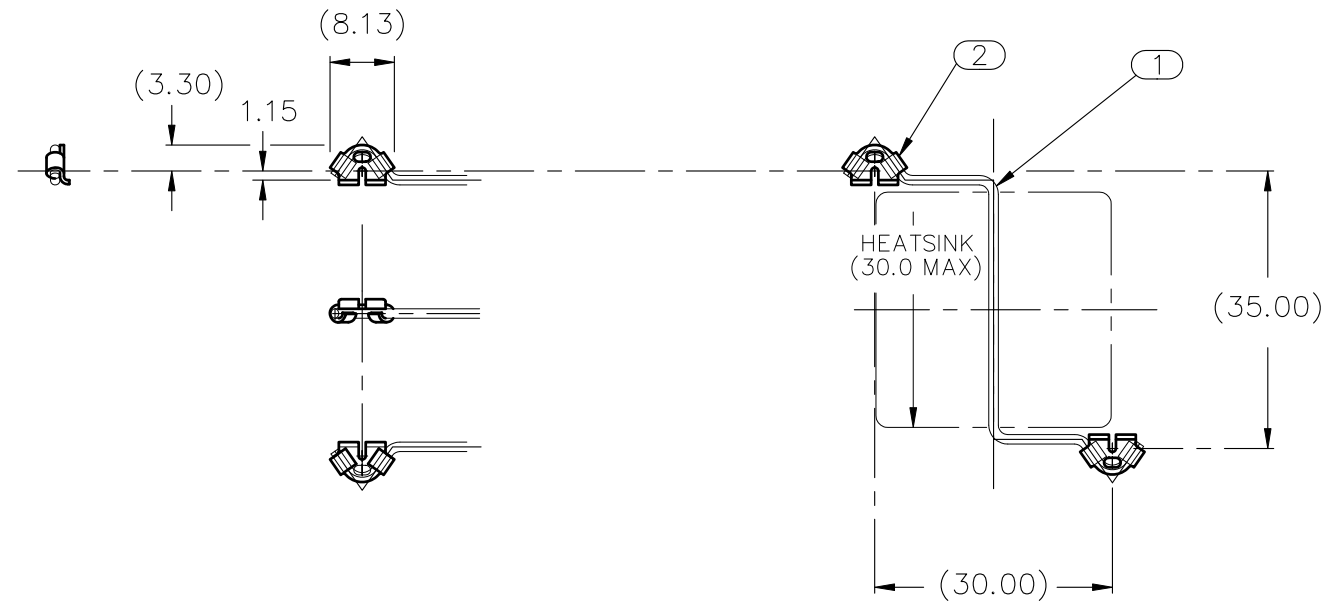


REVISIONS				
REV	DATE	DESCRIPTION	CHG	APPR



ANCHOR LAYOUT ON BOARD  
REQUIRES  $\phi 1.50 \pm 0.05$  THRU HOLES  
FOR ANCHORS IN BOARD.

- NOTES : UNLESS OTHERWISE SPECIFIED
1. INTERPRET DIMENSIONS AND TOLERANCES PER ANSI Y14.5M
  2. ALL DIMENSIONS ARE IN MILLIMETERS.
  3. TOLERANCES :  
 .XX  $\pm 0.254$   
 .XXX  $\pm 0.127$   
 ANGLES  $\pm 5^\circ$

ITEM	PART NO.	PART NAME	REMARK	Q'TY
②	S001YZ6Z	R-HOOK PLATE DIA1.4	STAINLESS STEEL SUS304(2B) 0.6 THICK	2
①	S001ZBLF	CQZL30-35-S	SW-C (SWIC-F NICKEL PRECOATED) WIRE DIA 1.20	1

<b>ALPHA CO.,LTD.</b>		CSTM'R'S PART NO.	
	MATERIAL	NAME CQZL30-35	
SCALE 1 : 1	APPR & CHCK T. SUZUKI	PART NO. & DWG NO. S001ZBL9	REV
DATE JAN 12, 2023	DSGN & DWG T. SUZUKI	RDCTN:	LOFF: