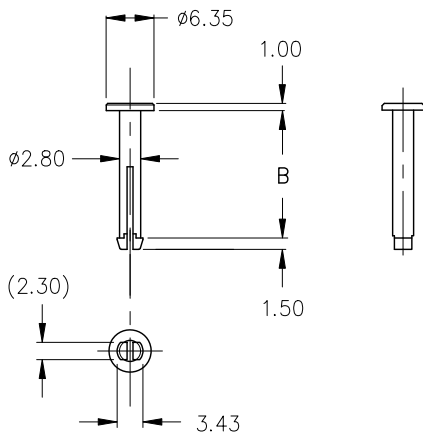


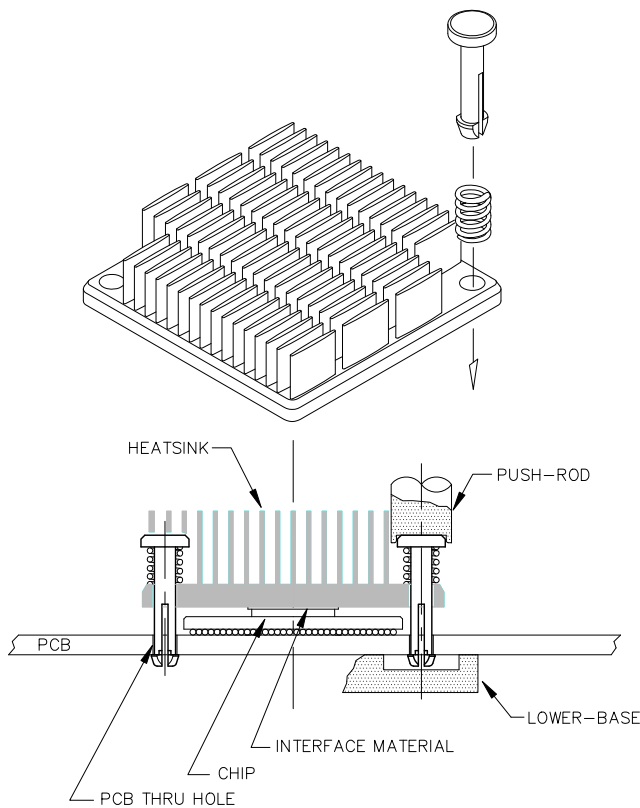
THE PIP3 SERIES MOUNTS THE HEATSINK TO THE PCB USING A SPRING. OBTAINING ADEQUATE PRESSURE REQUIRED FOR THERMAL INTERFACE MATERIAL PERFORMANCE IS EASILY ATTAINED BY CHOOSING AN APPROPRIATE SPRING (NOT INCLUDED.).

DIM



P/N	PART NAME	B
S001YZ75	PIP3x9	9
S001YZ74	PIP3x10	10
S001YZ76	PIP3x11	11
S001YZ77	PIP3x12	12
S001YZ78	PIP3x14	14
S001YZ79	PIP3x18	18

- MATERIAL : BRASS (ROHS COMPLIANT)
C6801 SAN-ETU METALS BZ5
OR EQUIVALENT
- DIMENSIONS mm



REFERENCES:

- HEATSINK:
REQUIRES HEATSINK HOLE DIAMETER OF 3.25 IF "PIP3 + SPRING" NEEDS TO BE CAPTIVE.
- BOARD:
REQUIRES $\phi 3.00 \pm 0.05$ THRU HOLES IN BOARD.
- INSTALLATION:
THE SPRING SHOULD NOT BE COMPRESSED TO SOLID LENGTH DURING INSTALLATION AND SHOULD BE SUPPORTED BY THE LOWER-BASE. PUSH-ROD AND LOWER-BASE NEEDS TO BE OBTAINED/PRODUCED LOCALLY.

JUL 2022

Alpha Company Ltd.

256-1 UEDA, NUMAZU-CITY SHIZUOKA-PREF., JAPAN
 PHONE +81(55)966 0789
 FAX +81(55)966 9192
 E mail : alpha@micforg.co.jp
 URL : <https://www.micforg.co.jp>

Alpha Novatech, Inc. - a subsidiary of Alpha Company.

473 Sapena Ct. #12 Santa Clara, CA 95054 USA
 PHONE +1(408)567-8082
 FAX +1(408)567-8053
 E mail : sales@alphanovatech.com
 URL : <https://www.alphanovatech.com>